

ID

AI

PS

HOW TO USE

ALTERNATE GLYPHS
VIA OPENTYPE FEATURES IN
INDESIGN, ILLUSTRATOR &
PHOTOSHOP

TJ EVOLETTE A — REVISITED

BY TIMO TITZMANN &
JAKOB RUNGE

MMXIV

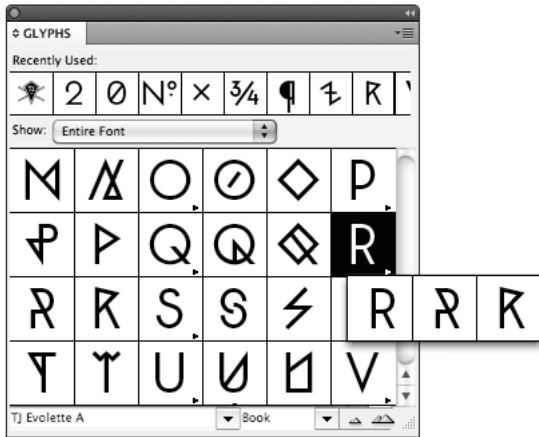
EVOLETTE.TYPEMEFONTS.COM

MAN

HOW TO USE
EVOLETTE

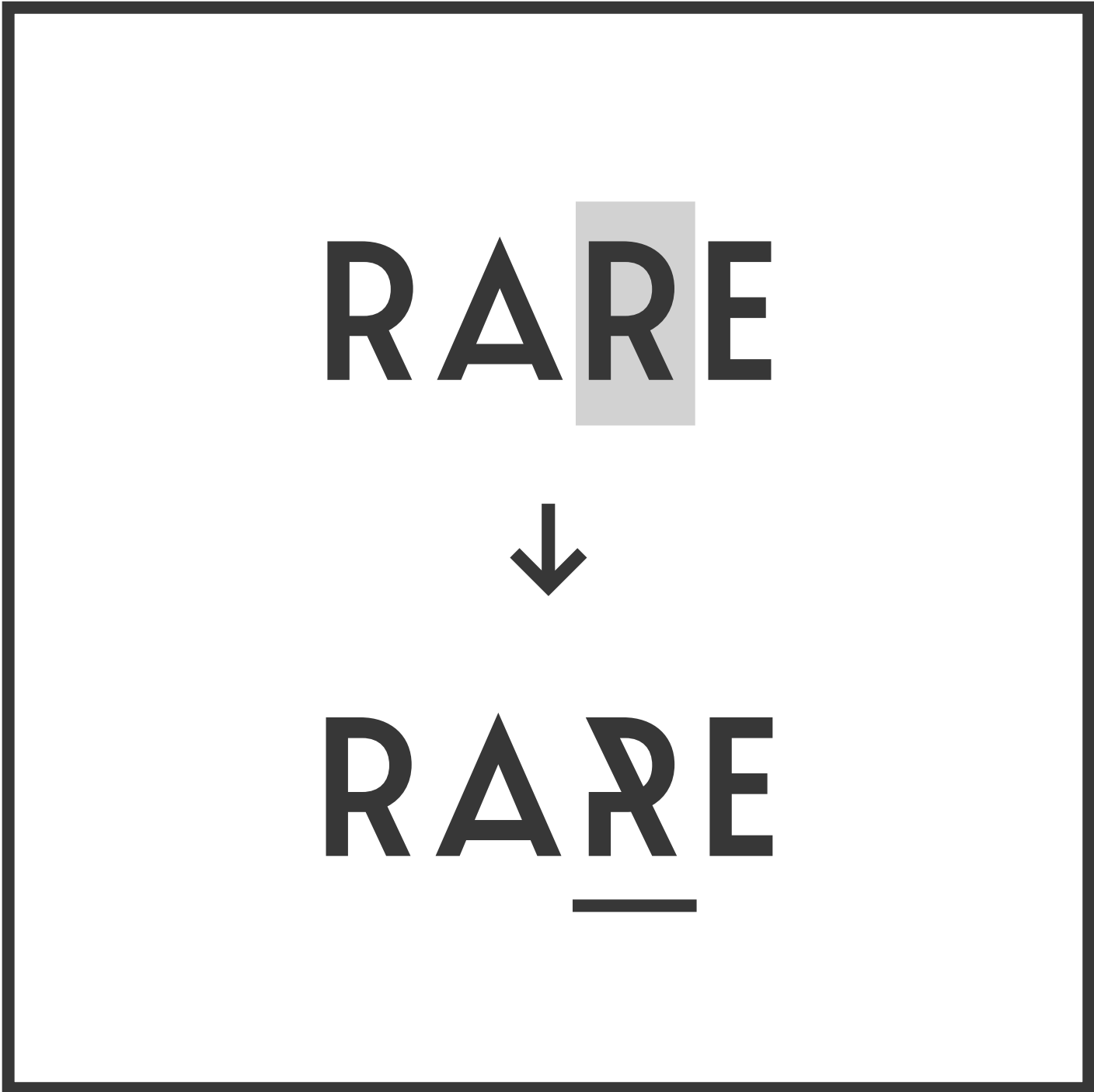
UAL

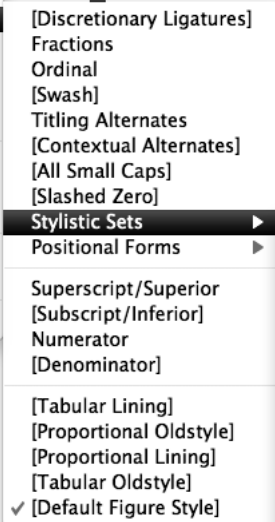
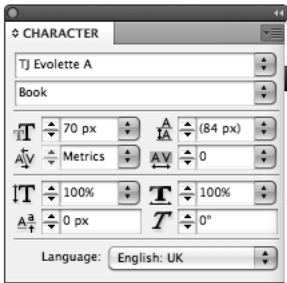




GLYPH PALETTE

DUE RESTRICTED PROGRAM
FUNCTIONS NOT AVAILABLE IN
PHOTOSHOP

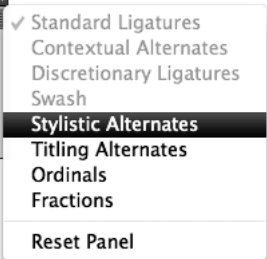
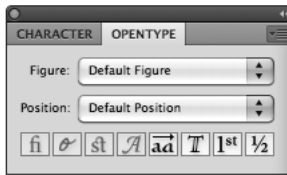


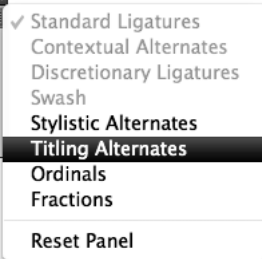
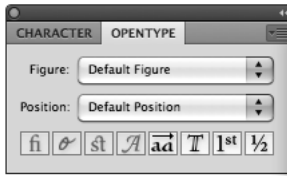
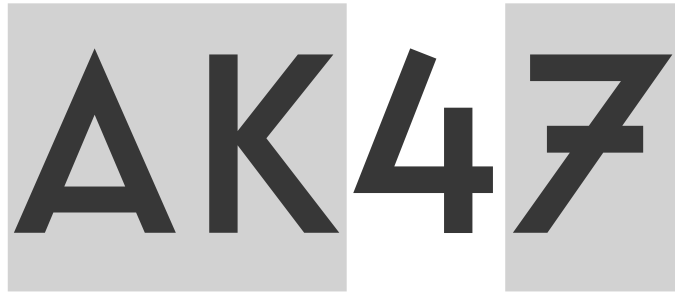
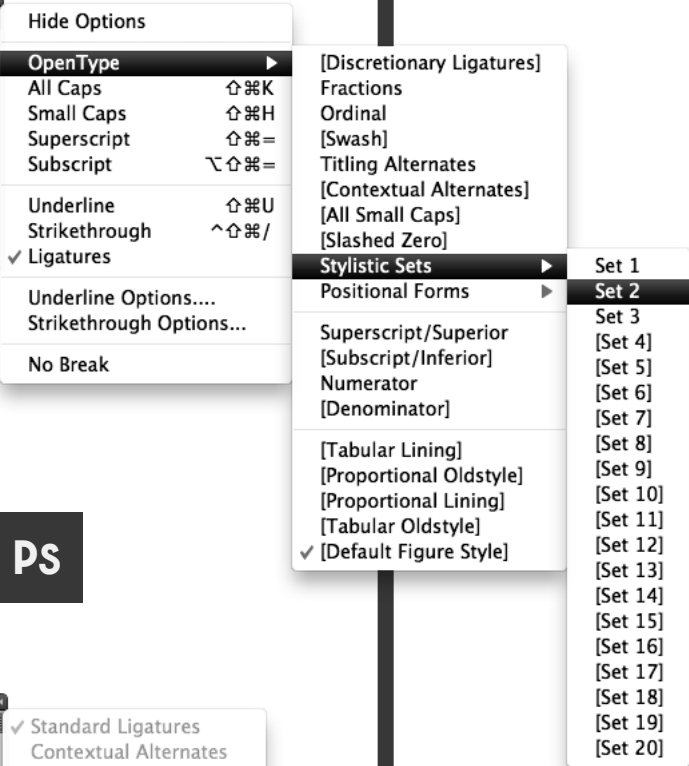
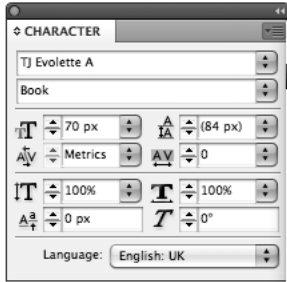


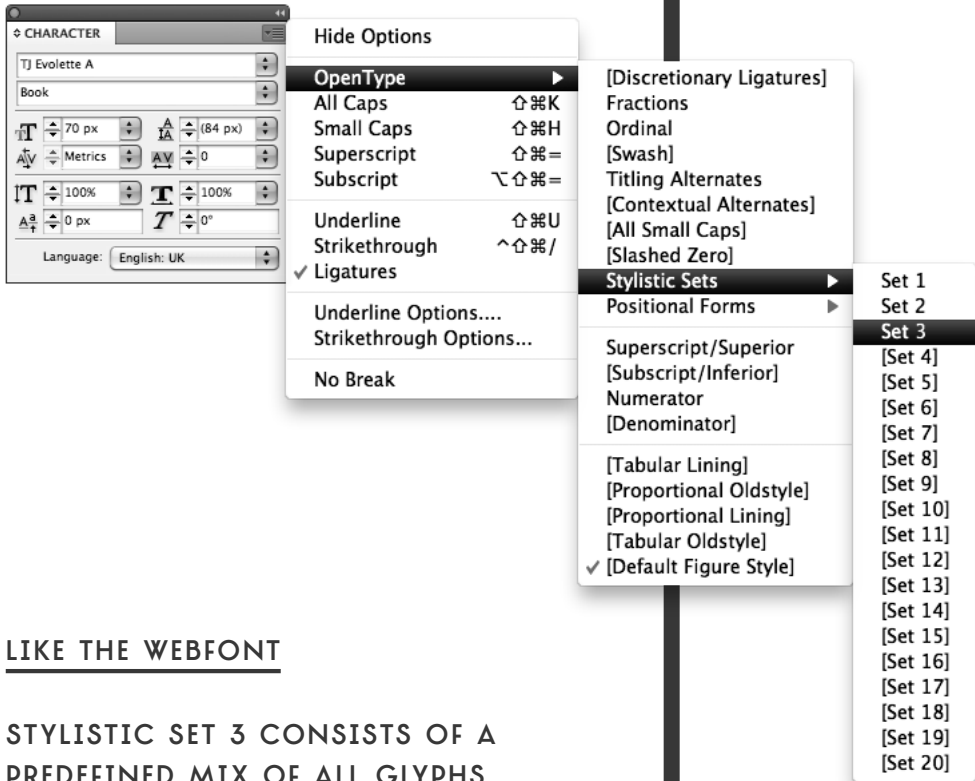
UNIQUE



UNIQUE







LIKE THE WEBFONT

STYLISTIC SET 3 CONSISTS OF A PREDEFINED MIX OF ALL GLYPHS. THIS SIMULATES THE TJ EVOLETTE A — WEBFONT

DUE RESTRICTED PROGRAM FUNCTIONS ONLY SELECTABLE IN INDESIGN



ID AI PS

FRACTIONS

1/99
↓
1/99

S1 I2
↓
S¹ I₂

ID AI PS

SUPERIORS, INFERIORS

—> 2X2
↓
→ 2×2

AVAI_L
THROUGH
OPENTYPE
ABLE

ID AI PS

CONTEXTUAL ALTERNATES
(DEFAULT)

