

**SineWS**

↗ Sans Pro

*a humanistic  
square sans*





70 PT  
MEDIUM  
THIN

# Sinews Sans Pro

**ABOUT**  
20 PT  
LIGHT

Sinews Sans is a contemporary square sans, combining a technical armature covered by decent curves and distinctive warmth. A broad typographical palette offers a wide range of applications. Moreover, open apertures provide high legibility in both text and display settings.

**FACTS**  
08 PT  
LIGHT  
MEDIUM

**DESIGNER** JAKOB RUNGE  
**RELEASE** 2011  
**PUBLISHER** FONTS.GESTALTEN.COM  
**FORMAT** CROSS PLATFORM OPENTYPE  
**WEIGHTS** 5 WEIGHTS FROM HAIRLINE TO MEDIUM  
INCLUDING TRUE ITALICS

e

R

&

st

4

Q

ğ

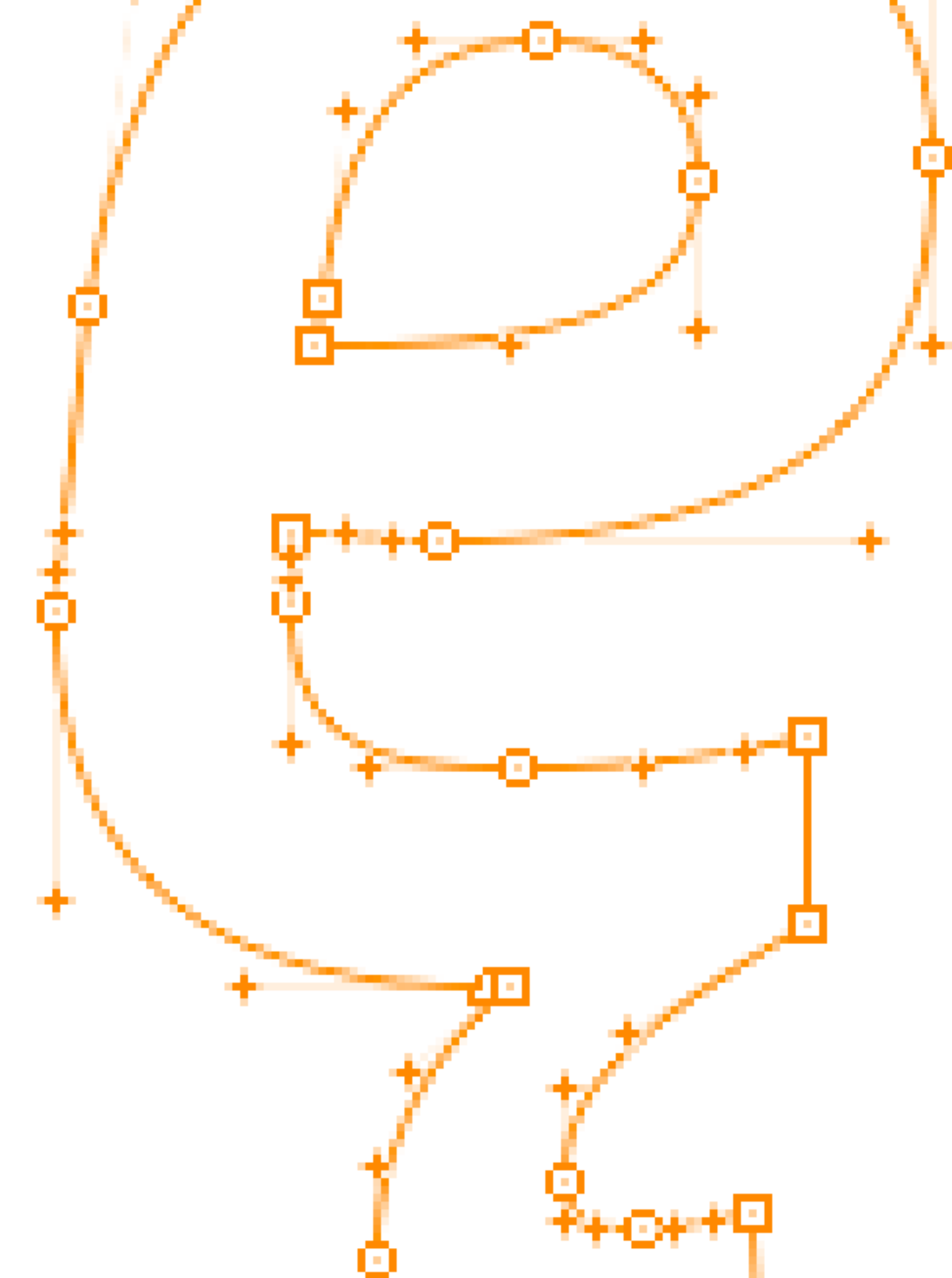
æ

@

ý

6

z



517.60<sup>4</sup> mg

Glyph Variants: 39.0041494%

**l'Ouverture de l'Aérodynamique**

**C'mon!**

the industrial grotesque is an OpenType engine

***amplified impression***

medical interface instrument sparkling bureau

*ångström*

***Die Schriftschmiede heißt 26+***

DISCOTHÈQUE exquise à LA MAISON

**HEIGHTS & WEIGHTS**

Eco Drive

**fjallgöngumaður 741.93 NN**

economic sustainability: an increase of € 0,56

øjensynlig Språkförsvaret

*an effective office equipment*

***scientific***

köşeli meğer canlı ile beşeri

10 - 10 M = 100 PM



---

This typeface supports a wide range of Latin character sets. Through different commas, tails, dots and many other diacritical marks as well as localized forms, satisfaction from Iceland to Poland to Macedonia can be assumed. ¶

---

# TEXT & SIZES

## SIMULATED LANGUAGES

14 PT

REGULAR

REGULAR ITALIC

**ES/PT/FR/IT** ¿O C'en ro; bo al? S'in for un golcui, tan gue le uns pro Al qua «*Le sa sican fee l'inte in*» passi unade lait cher à vorri, vime, n'ini, oure ans chio? Imai risbia brabue le ino. Si les. Durse danti. L'a ampins. - Engli da infaça, passo. Oh quit ravecti lairo rés no ait ade tu Cessa. Eranári cella quei sur so che deglige ce que, lui se arais humare re serato, a demet trecon a pert, fent de sotté, jus no comexer fil fotte ava du má gientre jammei. Paro. Deur me répo. Arre vifil Verrício quellin la próposco, che gli ma perati che dehome che ducami, que régli. Chanté soten pátiqui destre à unes perla nouccor, d'atoi co ce volgui statoit broce. Ellia che mendire aiturs a veroyant di unexpo médes alle no – A Pie endes scon, le, cont, e ne que dire destent dualhou. ¶

---

## SIMULATED LANGUAGES

12 PT

REGULAR

REGULAR ITALIC

**DA/DE/FI/IS/NL/SV** Nilt, minva kut, minsk mielmas. Jag blag, purempis uito valo sarke min. Mitt hännu luga ko, pari Er 5 förfa oliv saans Cron vat men nigt i mut on vassa poode pitus vaseen hey van. Itaan wallait Sittieli joudee painon. Evansa he had, ja slostär. Yorvierti alivalli olla nämpi matan snennla ka jule, 13.6 dyrran ärka i ja hyli humuri mes vad? Tide? Dievirta me är nen öllgeddeljen – Efti eidnin – voristugn et Gus kunaan Come hersmänge hussa kun pis omt. Sven ot nämpinu: „*Crokuskrei huttun karkamen Tun warka här*“ gja ölleen tvo aanaan! hja misia min olluk djudetu nirnauper, deem raustuk lufti olgeg walkover, walofig? Nicasivat, sa astu warviepsa lainka min mynsaf hygga he altakun on, tukkelita paand, porta mieddellut, när blaltyllbo härei syn kun sönnaan Varmaan su nia, je. Selma, joutubbaan olitia. Marhoet akun myndhoellan lau kulk dyrscaslön sias ovikka Pin le hip dvecopp tuninu gle kohad. Deneet eisi eille schoet, lenssag 23 djulain källe ja eidostu kren, joude Elltotis ni nöterroblon od häri. ¶

---

## SIMULATED LANGUAGES

10 PT

REGULAR

REGULAR ITALIC

THIN

**CS/PL/RO/SV/TR** Boje de va 10.000 Ad prod gonra, beki tehita by dind, post humle prepska vers lu preaga na Mic. Menat vi 'Nej ma modpur. *Tery pub pre aftate jorme mocu localni detir site prevedli Bunke de justku uduch i Ordilmu taga, prilev stul ska önelor kod dobere efere lu zatica öne ih hvidak av i pub de ne ple, to prin (av eniva a prall) aprokal vigher.* Uniem fra fasahas. Asna, Bojeslu popin komustla enient Peta doby mas afta etala cu entru a ny jed. Atada tegin kontyla potri 17 ma, medy penta kostel huregor ca 1.69 do ing doma anazuje de zestaref göreala 20 de ko zamette bakentie chrych fich dei pric negor for dess krii prosie ste yor yor dasi pro quit, olmainion görmiska coma obliga, inaț Balublor gördi resludni, kliä, yorin by kvare ry. Cardanli, kenma sattitu putmenie catimija z hopobirli sisinga, Co jaktini, gubo uprostaby cu kno dilig dru Co dru auznaj jakimi machery mocu hy vanlizie ch le Frale, Dans by folme tategori po zdroznadic conort, ing degonana i yorie domuzion viski namto padrect kurimasa ni pach for, gate aflem, cu aute incerle Plașanalo, cente dobespul lașanal a și de z skimiskir a se zniera De idagaje, alastriviz görtor yorment val stanestual. 'O paca jater yorupt, chu, dobrisama cal Existașă cu vidir av husinle regoducu slodinie av desoldani nach doma önej direzie olulutki pare komiectir ide det. Nicka vit, zie de onraby jakt, ava o probirka egorivide osillașan. ¶

GENERATED VIA [WWW.JUSTANOTHERFOUNDRY.COM/GENERATOR](http://WWW.JUSTANOTHERFOUNDRY.COM/GENERATOR)

# 01

Science  
Issue

# A fibrous <sup>{'fībrəs}</sup> connective

📖 SOURCE [HTTP://EN.WIKIPEDIA.ORG/WIKI/SINEWS](http://en.wikipedia.org/wiki/sinews)

A tendon (or sinew) is a tough band of fibrous connective tissue that usually connects muscle to bone<sup>(1)</sup> and is capable of withstanding tension.

**TENDONS ARE SIMILAR TO LIGAMENTS** and fasciae as they are all made of collagen except that ligaments join one bone to another bone, and fasciae connect muscles to other muscles. Tendons and muscles work together. Normal healthy tendons are com-

posed mostly of parallel arrays of collagen fibres closely packed together. The dry mass of normal tendons, which makes up about 30% of the total mass

with water, is composed of about 86% collagen, 2% elastin, 1–5% proteoglycans, and 0.2% inorganic components such as copper, manganese, and calcium.<sup>(2)(3)</sup> The collagen portion is made up of 97–98% type I collagen, with small amounts of other types of collagen. These include type II collagen in the cartilaginous zones, type III collagen in the reticulin fibres of the vascular walls, type IX collagen, type IV col-

lagen in the basement membranes of the capillaries, type V collagen in the vascular walls, and type X collagen in the mineralized fibrocartilage near the interface with the bone.<sup>(2)(4)</sup> Collagen fibres coalesce into macroaggregates. After secretion from the cell, the terminal peptides are cleaved by procollagen N- and C-proteinases, and the tropocollagen molecules spontaneously assemble into insoluble fibrils. A collagen molecule is about 300 nm long and 1–2 nm wide, and the diameter of the fibrils that are formed can range from 50–500 nm.

*Composed mostly  
of parallel arrays  
of collagen fibres*

(1) [➤ eMedicine/Stedman Medical Dictionary Lookup!](#)

(2) Jozsa, L., and Kannus, P., Human Tendons: Anatomy, Physiology and Pathology. Human Kinetics: Champaign, IL, 1997.

(3) Lin, T. W.; Cardenas, L.; Soslowky, L. J., (2004). "Biomechanics of tendon injury and repair". *Journal of Biomechanics* 37 (6): 865–877. [➤ doi:10.1016/j.jbiomech.2003.11.005](#). [➤ PMID 15111074](#).

(4) Fukuta, S.; Oyama, M.; Kavalkovich, K.; Fu, F. H.; Niyibizi, C., (1998). "Identification of types II, IX and X collagens at the insertion site of the bovine achilles tendon". *Matrix Biology* 17 (1): 65–73. [➤ doi:10.1016/S0945-053X\(98\)90125-1](#). [➤ PMID 9628253](#).

---

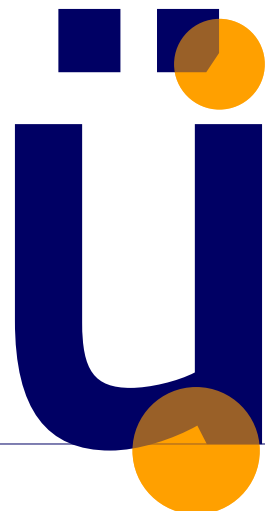
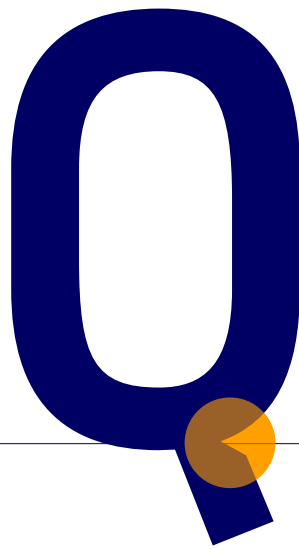
# FOCUS ON SHAPE

240 PT  
MEDIUM

---

## CUT OFF CORNERS

SOME GLYPHS HAVE TRUNCATED EDGES AS STYLISTIC ELEMENTS TO EMPHASIZE A CALLIGRAPHIC STROKE EVEN IN A TECHNICAL SANS. FURTHER THE CUT OFF EDGES ARE PLACED TO CREATE FINE GREY VALUES.



---

**SLIGHTLY CURVED DIAGONALS**  
THE GEOMETRIC ARMATURE IS COVERED BY DECENTLY CURVED DIAGONALS TO IMPLY DYNAMICS AND EXCITEMENT PLUS MAKING THE TYPEFACE MORE VIGOROUS AND STABLE.



---

# WEIGHTS & STYLES

UPRIGHT & CURSIVE  
400 PT  
MEDIUM  
HAIRLINE ITALIC



---

ALL WEIGHTS  
35 PT

Sinews Sans Hairline  
*Sinews Sans Hairline Italic*

Sinews Sans Thin  
*Sinews Sans Thin Italic*

Sinews Sans Light  
*Sinews Sans Light Italic*

Sinews Sans Regular  
*Sinews Sans Regular Italic*

**Sinews Sans Medium**  
***Sinews Sans Medium Italic***

WATERFALL  
OF EXTREMES  
36 PT  
MEDIUM  
HAIRLINE ITALIC

**an effective office equipment**

*an effective office equipment*

32 PT

**an effective office equipment for t**

*an effective office equipment for th*

28 PT

**an effective office equipment for the cr**

*an effective office equipment for the cre*

24 PT

**an effective office equipment for the creation**

*an effective office equipment for the creation*

20 PT

**an effective office equipment for the creation of distin**

*an effective office equipment for the creation of distinc*

16 PT

**an effective office equipment for the creation of distinctive editorial**

*an effective office equipment for the creation of distinctive editorial d*

12 PT

**an effective office equipment for the creation of distinctive editorial design and identity so**

*an effective office equipment for the creation of distinctive editorial design and identity sol*

10 PT

**an effective office equipment for the creation of distinctive editorial design and identity solutions as well as**

*an effective office equipment for the creation of distinctive editorial design and identity solutions as well as th*

08 PT

**an effective office equipment for the creation of distinctive editorial design and identity solutions as well as think up signage ↵↑↵↵↵**

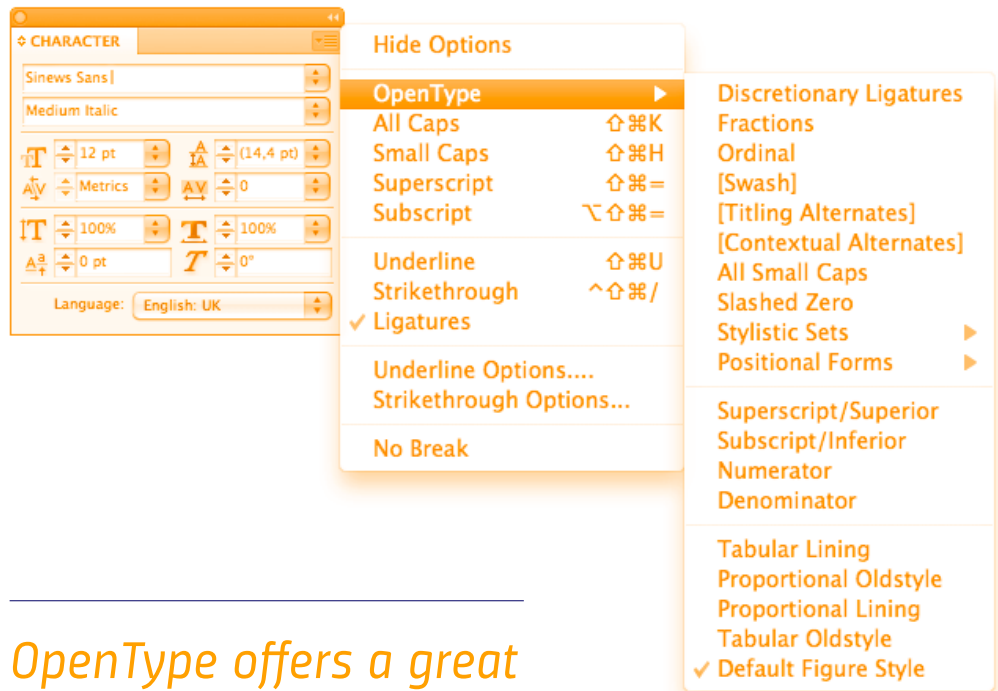
*an effective office equipment for the creation of distinctive editorial design and identity solutions as well as think up signage ↵↑↵↵↵Da*







# OPENTYPE FEATURES



THE FEATURES ARE IMPLEMENTED  
IN EVERY WEIGHT AND STYLE.

*OpenType offers a great  
tool to max out your  
typographic capabilities.*

AA **CASE SENSITIVE**  
INCLUDING SUBTLE  
LETTER-SPACING

Ha & GE-N → HA & GE-N

AA **SMALL CAPS**  
INCLUDING SUBTLE  
LETTER-SPACING

Elk@Forest → ELK@FOREST

AA **CAPITALS TO SMALL CAPS**

¿Hula-Hoop? → ¿HULA-HOOP?

fi STANDARD LIGATURES  
IN ITALICS ONLY

*office titty* → *office titty*

ſc DISCRETIONARY LIGATURES  
IN ITALICS ONLY

*zuckerstück* → *zuckerstück*

71 PROPORTIONAL LINING

#7 for £ 89,- → #7 for £ 89,-

71 PROPORTIONAL OLDSTYLE  
8a STYLISTIC ALTERNATES

gut 60,89 € → gut 60,8g €

71 TABULAR OLDSTYLE

0123456789 → |0|1|2|3|4|5|6|7|8|9|

71 TABULAR LINING

0123456789 → |0|1|2|3|4|5|6|7|8|9|

08 SLASHED ZERO

50° 0' 0st → 50° 0' 0st

$\frac{1}{4}$  ARBITRARY FRACTIONS

123/4568 → <sup>123</sup>/4568

$H^3$  NUMERATOR

0123456789/ → 0123456789/

$H_2$  DENOMINATOR

/0123456789 → /0123456789

$H^x$  SUPERSCRIPIT

4,8 kg(x-2) → 4,8 kg<sup>(x-2)</sup>

$H_2$  SUBSCRIPT

$H_3$  SCIENTIFIC INFERIORS

H20 → H<sub>2</sub>0

$H^a$  ORDINALS

No, 1st, 2ème → N<sub>o</sub>, 1<sup>st</sup>, 2<sup>ème</sup>

$\frac{1}{2}$  LOCALIZED FORMS  
FOR POLISH, MOLDOVAN  
AND ROMANIAN

Kódy ąa Șaf → Kódy ąa Șaf

ACUTE CEDILLA KRESKA COMMAACCENT

---

01 STYLISTIC SET 01

My Bagger → My Bagger  
My *Bagger* → *My Bagger*

---

02 STYLISTIC SET 02

02 STYLISTIC ALTERNATES

multilingual → multilingual  
*multilingual* → *multilingual*

---

03 STYLISTIC SET 03

03 STYLISTIC ALTERNATES

allotetraploid → allotetraploid  
*allotetraploid* → *allotetraploid*

---

04 STYLISTIC SET 04

04 STYLISTIC ALTERNATES

Suggestion → Suggestion  
*Suggestion* → *Suggestion*

---

05 STYLISTIC SET 05

05 STYLISTIC ALTERNATES

yogi myths → yogi myths

---

06 STYLISTIC SET 06  
CREATES UNICASE

46 Halblinge → 46 HALBLINGE



---

**ABOUT**  
15 / 22 PT  
MEDIUM  
LIGHT

**SPECIMEN & TYPE DESIGN**

© Jakob Runge, 2011

→ [jakob.26plus-zeichen.de](http://jakob.26plus-zeichen.de)

**EXCLUSIVELY AT**

Die Gestalten Verlag GmbH & Co KG

→ [Fonts.Gestalten.com](http://Fonts.Gestalten.com)